

MAGNASOURCE INC.

CHAIN

QUICK
REFERENCE
GUIDE

Example Part #: SY CH BL 6 34 - 10

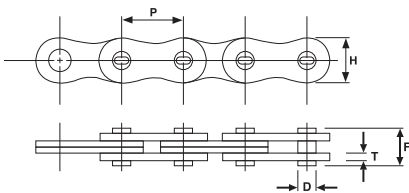
SY	CH	BL	6	34	-	10
	CH = Chain	Chain Series: AL - For AL series chain or BL - For BL series chain *Note: Please specify your chain series	Pitch: 3 = (0.375" pitch) 4 = (0.500" pitch) 5 = (0.625" pitch) 6 = (0.750" pitch) 8 = (1.000" pitch) 10 = (1.250" pitch) 12 = (1.500" pitch) 14 = (1.750" pitch) 16 = (2.000" pitch)	Lacing: 22 = 2x2 Lacing 23 = 2x3 Lacing 34 = 3x4 Lacing 44 = 4x4 Lacing 46 = 4x6 Lacing 66 = 6x6 Lacing 88 = 8x8 Lacing		Size: 6 = 6 Feet 10 = 10 Feet 12 = 12 Feet 14 = 14 Feet 15 = 15 Feet 20 = 20 Feet 25 = 25 Feet 50 = 50 Feet 100 = 100 Feet CUT = Please specify exact length needed (in feet)

LEAF CHAIN CADENAS DE MALLAS CHAÎNE À MAILLES JOINTIVES

2x2 BL Series

ANSI No.	Lacing	Pitch (P)	Pin Diam (D)	Pin Length Over-All (F)	Plate Thickness (T)	Plate Height (H) (max)	Average Tensile Strength Lbs.	Master Link
BL-522	2 x 2	0.625"	0.234"	0.508"	0.096"	0.594"	7,591	SYBL522
BL-622	2 x 2	0.750"	0.312"	0.684"	0.130"	0.712"	11,114	SYBL622
BL-822	2 x 2	1.000"	0.375"	0.840"	0.161"	0.950"	19,204	SYBL822

2x2 BL Series Availability

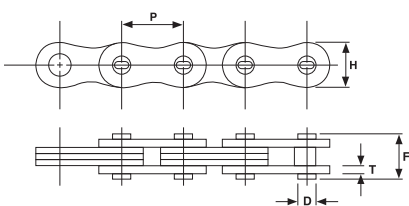


	-CUT	-6	-10	-12	-14	-15	-20	-25	-50	-100
SYCHBL522	•									
SYCHBL622	•									
SYCHBL822	•		•			•	•	•	•	•

2x3 BL Series

ANSI No.	Lacing	Pitch (P)	Pin Diam (D)	Pin Length Over-All (F)	Plate Thickness (T)	Plate Height (H) (max)	Average Tensile Strength Lbs.	Master Link
BL-423	2 x 3	0.500"	0.200"	0.518"	0.082"	0.475"	5,045	SYBL423
BL-523	2 x 3	0.625"	0.234"	0.605"	0.096"	0.594"	7,591	SYBL523
BL-623	2 x 3	0.750"	0.312"	0.816"	0.130"	0.712"	11,114	SYBL623
BL-823	2 x 3	1.000"	0.375"	1.003"	0.161"	0.950"	19,204	SYBL823
BL-1023	2 x 3	1.250"	0.437"	1.194"	1.929"	1.188"	26,272	SYBL1023
BL-1223	2 x 3	1.500"	0.500"	1.395"	0.227"	1.425"	34,363	SYBL1223

2x3 BL Series Availability

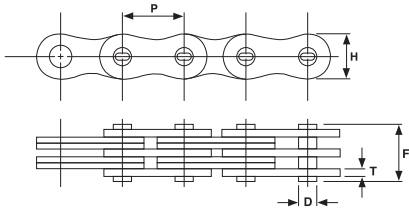


	-CUT	-6	-10	-12	-14	-15	-20	-25	-50	-100
SYCHBL423	•		•			•	•	•	•	•
SYCHBL523	•		•			•	•	•	•	•
SYCHBL623	•		•			•	•	•	•	•
SYCHBL823	•		•	•	•	•	•	•	•	•
SYCHBL1023	•		•			•	•	•	•	•
SYCHBL1223	•		•			•	•	•	•	•

3x4 BL Series

ANSI No.	Lacing	Pitch (P)	Pin Diam (D)	Pin Length Over-All (F)	Plate Thickness (T)	Plate Height (H) (max)	Average Tensile Strength Lbs.	Master Link
BL-434	3 x 4	0.500"	0.200"	0.685"	0.082"	0.475"	7,591	SYBL434
BL-534	3 x 4	0.625"	0.234"	0.800"	0.096"	0.594"	11,114	SYBL534
BL-634	3 x 4	0.750"	0.312"	1.080"	0.130"	0.712"	17,181	SYBL634
BL-834	3 x 4	1.000"	0.375"	1.329"	0.161"	0.950"	29,318	SYBL834
BL-1034	3 x 4	1.250"	0.437"	1.584"	1.929"	1.188"	41,454	SYBL1034
BL-1234	3 x 4	1.500"	0.500"	1.853"	0.227"	1.425"	55,591	SYBL1234
BL-1434	3 x 4	1.750"	0.562"	2.101"	0.258"	1.663"	71,772	SYBL1434
BL-1634	3 x 4	2.000"	0.687"	2.430"	0.296"	1.900"	100,091	SYBL1634

3x4 BL Series Availability

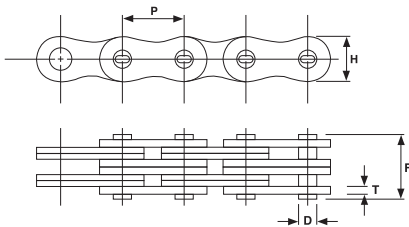


	-CUT	-6	-10	-12	-14	-15	-20	-25	-50	-100
SYCHBL434	•		•			•	•	•	•	•
SYCHBL534	•		•	•	•	•	•	•	•	•
SYCHBL634	•	•	•	•	•	•	•	•	•	•
SYCHBL834	•		•			•	•	•	•	•
SYCHBL1034	•		•			•	•	•	•	•
SYCHBL1234	•		•			•	•	•	•	•
SYCHBL1434	•		•			•	•	•	•	•
SYCHBL1634	•		•			•	•	•	•	

4x4 BL Series

ANSI No.	Lacing	Pitch (P)	Pin Diam (D)	Pin Length Over-All (F)	Plate Thickness (T)	Plate Height (H) (max)	Average Tensile Strength Lbs.	Master Link
BL-544	4 x 4	0.625"	0.234"	0.897"	0.096"	0.594"	15,159	SYBL544
BL-644	4 x 4	0.750"	0.312"	1.212"	0.130"	0.712"	22,250	SYBL644
BL-844	4 x 4	1.000"	0.375"	1.492"	0.161"	0.950"	38,409	SYBL844
BL-1044	4 x 4	1.250"	0.437"	1.779"	1.929"	1.188"	52,568	SYBL1044
BL-1244	4 x 4	1.500"	0.500"	2.082"	0.227"	1.425"	68,750	SYBL1244
BL-1644	4 x 4	2.000"	0.687"	2.728"	0.296"	1.900"	131,431	SYBL1644

4x4 BL Series Availability

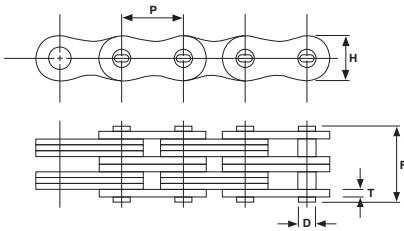


	-CUT	-6	-10	-12	-14	-15	-20	-25	-50	-100
SYCHBL544	•	•	•			•	•	•	•	•
SYCHBL644	•		•			•	•	•	•	•
SYCHBL844	•		•			•	•	•	•	•
SYCHBL1044	•		•			•	•	•	•	•
SYCHBL1244	•		•			•	•	•	•	•
SYCHBL1644	•		•							

4x6 BL Series

ANSI No.	Lacing	Pitch (P)	Pin Diam (D)	Pin Length Over-All (F)	Plate Thickness (T)	Plate Height (H) (max)	Average Tensile Strength Lbs.	Master Link
BL-446	4 x 6	0.500"	0.200"	0.935"	0.082"	0.475"	10,114	SYBL446
BL-546	4 x 6	0.625"	0.234"	1.092"	0.096"	0.594"	15,159	SYBL546
BL-646	4 x 6	0.750"	0.312"	1.476"	0.130"	0.712"	22,250	SYBL646
BL-846	4 x 6	1.000"	0.375"	1.818"	0.161"	0.950"	38,409	SYBL846
BL-1046	4 x 6	1.250"	0.437"	2.169"	1.929"	1.188"	52,568	SYBL1046
BL-1246	4 x 6	1.500"	0.500"	2.540"	0.227"	1.425"	68,750	SYBL1246
BL-1446	4 x 6	1.750"	0.562"	2.881"	0.258"	1.663"	86,954	SYBL1446
BL-1646	4 x 6	2.000"	0.687"	3.324"	0.296"	1.900"	131,431	SYBL1646

4x6 BL Series Availability

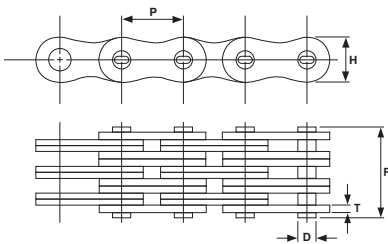


	-CUT	-6	-10	-12	-14	-15	-20	-25	-50	-100
SYCHBL446	•		•			•	•	•	•	•
SYCHBL546	•		•	•	•	•	•	•	•	•
SYCHBL646	•		•			•	•	•	•	•
SYCHBL846	•		•			•	•	•	•	•
SYCHBL1046	•		•			•	•	•	•	•
SYCHBL1246	•		•			•	•	•	•	•
SYCHBL1446	•		•			•	•	•	•	•
SYCHBL1646	•		•			•	•	•	•	

6x6 BL Series

ANSI No.	Lacing	Pitch (P)	Pin Diam (D)	Pin Length Over-All (F)	Plate Thickness (T)	Plate Height (H) (max)	Average Tensile Strength Lbs.	Master Link
BL-466	6 x 6	0.500"	0.200"	1.010"	0.082"	0.475"	15,159	SYBL466
BL-566	6 x 6	0.625"	0.234"	1.287"	0.096"	0.594"	22,750	SYBL566
BL-666	6 x 6	0.750"	0.312"	1.740"	0.130"	0.712"	33,364	SYBL666
BL-866	6 x 6	1.000"	0.375"	2.148"	0.161"	0.950"	57,636	SYBL866
BL-1066	6 x 6	1.250"	0.437"	2.559"	1.929"	1.188"	78,863	SYBL1066
BL-1266	6 x 6	1.500"	0.500"	2.998"	0.227"	1.425"	103,113	SYBL1266
BL-1466	6 x 6	1.750"	0.562"	3.401"	0.258"	1.663"	131,431	SYBL1466
BL-1666	6 x 6	2.000"	0.687"	3.920"	0.296"	1.900"	194,863	SYBL1666

6x6 BL Series Availability

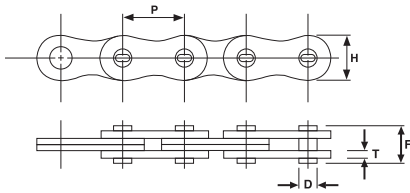


	-CUT	-6	-10	-12	-14	-15	-20	-25	-50	-100
SYCHBL466	•		•			•	•	•	•	•
SYCHBL566	•		•	•	•	•	•	•	•	•
SYCHBL666	•		•			•	•	•	•	•
SYCHBL866	•		•			•	•	•	•	•
SYCHBL1066	•		•			•	•	•	•	•
SYCHBL1266	•		•			•	•	•	•	•
SYCHBL1466	•									
SYCHBL1666	•		•			•	•	•	•	

2x2 AL Series

ANSI No.	Lacing	Pitch (P)	Pin Diam (D)	Pin Length Over-All (F)	Plate Thickness (T)	Plate Height (H) (max)	Average Tensile Strength Lbs.	Master Link
AL-322	2 x 2	0.375"	0.141"	0.268"	0.051"	0.300"	2,045	
AL-422	2 x 2	0.500"	0.156"	0.327"	0.059"	0.411"	3,304	
AL-522	2 x 2	0.625"	0.200"	0.435"	0.080"	0.504"	5,508	
AL-622	2 x 2	0.750"	0.234"	0.511"	0.095"	0.614"	7,508	
AL-822	2 x 2	1.000"	0.312"	0.638"	0.128"	0.820"	13,016	
AL-1022	2 x 2	1.250"	0.375"	0.772"	0.157"	1.008"	18,996	
AL-1222	2 x 2	1.500"	0.437"	0.957"	1.890"	1.201"	26,998	SYAL1222

2x2 AL Series Availability

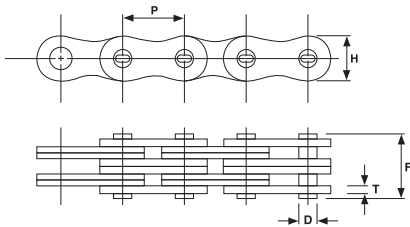


	-CUT	-10	-15	-20	-25	-50	-100
SYCHAL322		•	•	•	•	•	•
SYCHAL422		•	•	•	•	•	•
SYCHAL522	•						
SYCHAL622	•						
SYCHAL822	•						
SYCHAL1022		•	•	•	•	•	•
SYCHAL1222		•	•	•	•	•	•

4x4 AL Series

ANSI No.	Lacing	Pitch (P)	Pin Diam (D)	Pin Length Over-All (F)	Plate Thickness (T)	Plate Height (H) (max)	Average Tensile Strength Lbs.	Master Link
AL-444	4 x 4	0.500"	0.156"	0.567"	0.059"	0.411"	6,609	
AL-544	4 x 4	0.625"	0.200"	0.764"	0.080"	0.504"	10,993	SYAL544
AL-644	4 x 4	0.750"	0.234"	0.894"	0.095"	0.614"	14,994	SYAL644
AL-844	4 x 4	1.000"	0.312"	1.157"	0.128"	0.820"	26,609	SYAL844
AL-1044	4 x 4	1.250"	0.375"	1.433"	0.157"	1.008"	37,991	SYAL1044
AL-1244	4 x 4	1.500"	0.437"	1.724"	1.890"	1.201"	53,997	

4x4 AL Series Availability

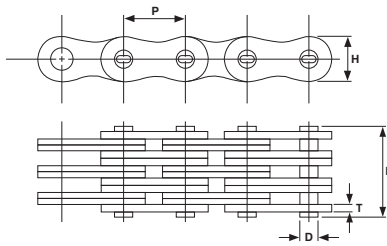


	-CUT	-10	-15	-20	-25	-50	-100
SYCHAL444		•	•	•	•	•	•
SYCHAL544	•	•	•	•	•	•	•
SYCHAL644	•	•	•	•	•	•	•
SYCHAL844	•	•	•	•	•	•	•
SYCHAL1044	•	•	•	•	•	•	•
SYCHAL1244		•	•	•	•	•	•

6x6 AL Series

ANSI No.	Lacing	Pitch (P)	Pin Diam (D)	Pin Length Over-All (F)	Plate Thickness (T)	Plate Height (H) (max)	Average Tensile Strength Lbs.	Master Link
AL-466	6 x 6	0.500"	0.156"	0.807"	0.059"	0.411"	9,891	SYAL466
AL-566	6 x 6	0.625"	0.200"	1.030"	0.080"	0.504"	16,500	SYAL566
AL-666	6 x 6	0.750"	0.234"	1.268"	0.095"	0.614"	22,502	SYAL666
AL-866	6 x 6	1.000"	0.312"	1.740"	0.128"	0.820"	39,003	SYAL866
AL-1066	6 x 6	1.250"	0.375"	2.059"	0.157"	1.008"	56,987	SYAL1066
AL-1266	6 x 6	1.500"	0.437"	2.488"	1.890"	1.201"	80,995	SYAL1266
AL-1466	6 x 6	1.750"	0.497"	2.933"	0.220"	1.433"	101,992	
AL-1666	6 x 6	2.000"	0.559"	3.299"	0.252"	1.640"	128,990	SYAL1666

6x6 AL Series Availability

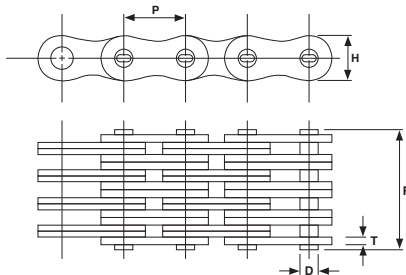


	-CUT	-10	-15	-20	-25	-50	-100
SYCHAL466	•	•	•	•	•	•	•
SYCHAL566	•	•	•	•	•	•	•
SYCHAL666	•	•	•	•	•	•	•
SYCHAL866	•	•	•	•	•	•	•
SYCHAL1066	•	•	•	•	•	•	•
SYCHAL1266	•	•	•	•	•	•	•
SYCHAL1466	•						
SYCHAL1666	•						

8x8 AL Series

ANSI No.	Lacing	Pitch (P)	Pin Diam (D)	Pin Length Over-All (F)	Plate Thickness (T)	Plate Height (H) (max)	Average Tensile Strength Lbs.	Master Link
AL-688	8 x 8	0.750"	0.234"	1.661"	0.095"	0.614"	29,988	SYAL688
AL-888	8 x 8	1.000"	0.312"	2.185"	0.128"	0.820"	52,019	SYAL888
AL-1088	8 x 8	1.250"	0.375"	2.700"	0.157"	1.008"	75,982	SYAL1088

8x8 AL Series Availability

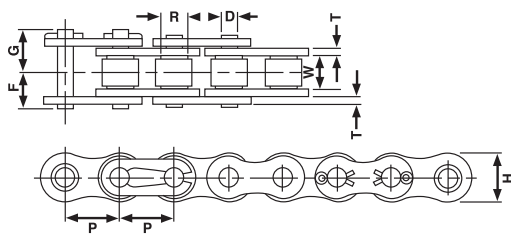


	-CUT	-10	-15	-20	-25	-50	-100
SYCHAL688	•	•	•	•	•	•	•
SYCHAL888	•	•	•	•	•	•	•
SYCHAL1088		•	•	•	•	•	•

Single Strand Roller Chain

ANSI No.	Pitch (P)	Roller Width (W)	Roller Diameter (R)	Plate Height (H)	Plate Thickness (T)	Pin Diam (D)	Overall Width (F)	Overall Width (G)	Average Tensile Strength Lbs.	Master Link
40	0.500"	0.312"	0.312"	0.463"	0.060"	0.156"	0.320"	0.375"	3,700	SY40R
50	0.625"	0.375"	0.400"	0.579"	0.080"	0.200"	0.401"	0.450"	6,100	SY50R
60	0.750"	0.500"	0.469"	0.673"	0.094"	0.234"	0.500"	0.549"	8,500	SY60R
80	1.000"	0.625"	0.625"	0.935"	0.125"	0.312"	0.636"	0.750"	14,500	SY80R
100	1.250"	0.750"	0.750"	1.165"	0.156"	0.375"	0.794"	0.910"	24,000	SY100R
120	1.500"	1.000"	0.875"	1.378"	0.187"	0.437"	0.995"	1.127"	31,000	SY120R
140	1.750"	1.000"	1.000"	1.661"	0.218"	0.500"	1.075"	1.194"	46,000	
160	2.000"	1.250"	1.125"	1.898"	0.250"	0.562"	1.275"	1.416"	58,000	SY160R
180	2.250"	1.406"	1.406"	2.135"	0.281"	0.687"	1.390"	1.560"	81,000	
200	2.500"	1.500"	1.562"	2.374"	0.312"	0.781"	1.570"	1.727"	105,000	
240	3.000"	1.875"	1.875"	2.805"	0.375"	0.937"	1.850"	2.200"	150,500	

Single Strand Roller Chain Availability

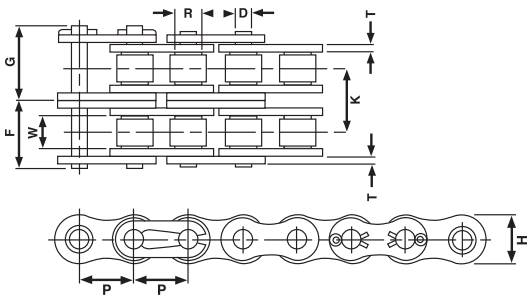


	-CUT	-10	-15	-20	-25	-50	-100
SYCH40	•	•	•	•	•	•	•
SYCH50	•	•	•	•	•	•	•
SYCH60	•	•	•	•	•	•	•
SYCH80	•	•	•	•	•	•	•
SYCH100	•	•	•	•	•	•	•
SYCH120		•	•	•	•	•	•
SYCH140		•	•	•	•	•	•
SYCH160	•	•	•	•	•	•	•
SYCH180		•	•	•	•	•	•
SYCH200		•	•	•	•	•	•
SYCH240		•	•	•	•	•	•

Double Strand Roller Chain

ANSI No.	Pitch (P)	Roller Width (W)	Roller Diameter (R)	Plate Height (H)	Plate Thickness (T)	Pin Diam (D)	Overall Width (F)	Overall Width (G)	Average Tensile Strength Lbs.
40-2	0.500"	0.309"	0.313"	0.472"	0.060"	0.156"	0.602"	0.645"	6,409
50-2	0.625"	0.375"	0.400"	0.579"	0.080"	0.200"	0.756"	0.815"	13,200
60-2	0.750"	0.500"	0.469"	0.673"	0.094"	0.234"	0.945"	1.016"	18,500
80-2	1.000"	0.625"	0.625"	0.935"	0.125"	0.312"	1.217"	1.326"	32,600
100-2	1.250"	0.750"	0.750"	1.165"	0.156"	0.375"	1.485"	1.590"	50,690
120-2	1.500"	1.000"	0.875"	1.425"	0.187"	0.437"	1.870"	1.996"	67,100
140-2	1.750"	1.000"	1.000"	1.661"	0.219"	0.500"	2.016"	2.161"	90,360
160-2	2.000"	1.250"	1.125"	1.898"	0.250"	0.562"	2.397"	2.587"	114,600
180-2	2.250"	1.406"	1.406"	2.135"	0.281"	0.687"	2.680"	2.870"	163,000
200-2	2.500"	1.500"	1.562"	2.374"	0.312"	0.781"	2.956"	3.213"	211,000
240-2	3.000"	1.875"	1.875"	2.850"	0.375"	0.937"	3.594"	3.960"	300,000

Double Strand Roller Chain Availability

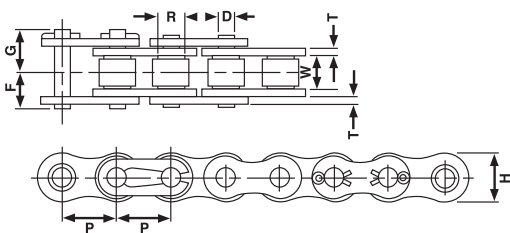


	-CUT	-10	-15	-20	-25	-50	-100
SYCH40-2		•	•	•	•	•	•
SYCH50-2		•	•	•	•	•	•
SYCH60-2		•	•	•	•	•	•
SYCH80-2		•	•	•	•	•	•
SYCH100-2		•	•	•	•	•	•
SYCH120-2		•	•	•	•	•	•
SYCH140-2		•	•	•	•	•	•
SYCH160-2		•	•	•	•	•	•
SYCH180-2		•	•	•	•	•	•
SYCH200-2		•	•	•	•	•	•
SYCH240-2		•	•	•	•	•	•

Single Strand Heavy Roller Chain

ANSI No.	Pitch (P)	Roller Width (W)	Roller Diameter (R)	Plate Height (H)	Plate Thickness (T)	Pin Diam (D)	Overall Width (F)	Overall Width (G)	Average Tensile Strength Lbs.
50H	0.625"	0.375"	0.400"	0.579"	0.094"	0.200"	0.429"	0.469"	7,930
60H	0.750"	0.500"	0.469"	0.673"	0.125"	0.234"	0.586"	0.662"	11,600
80H	1.000"	0.625"	0.625"	0.935"	0.156"	0.312"	0.699"	0.813"	19,800
100H	1.250"	0.750"	0.750"	1.165"	0.187"	0.375"	0.828"	0.969"	30,800
120H	1.500"	1.000"	0.875"	1.378"	0.218"	0.437"	1.032"	1.202"	36,300
140H	1.750"	1.000"	1.000"	1.661"	0.250"	0.500"	1.110"	1.281"	52,800
160H	2.000"	1.250"	1.125"	1.898"	0.281"	0.562"	1.297"	1.531"	58,000
200H	2.500"	1.500"	1.562"	2.374"	0.375"	0.781"	1.651"	2.015"	110,000

Single Strand Heavy Roller Chain Availability



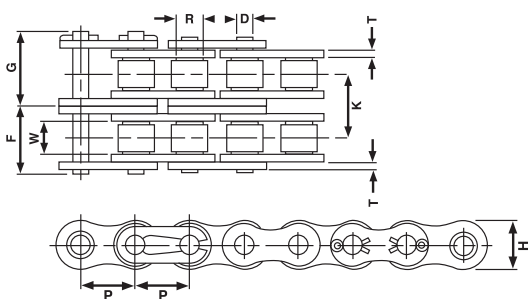
	-CUT	-10	-15	-20	-25	-50	-100
SYCH50H		•	•	•	•	•	•
SYCH60H		•	•	•	•	•	•
SYCH80H	•	•	•	•	•	•	•
SYCH100H		•	•	•	•	•	•
SYCH120H		•	•	•	•	•	•
SYCH140H		•	•	•	•	•	•
SYCH160H	•	•	•	•	•	•	•
SYCH200H		•	•	•	•	•	•

ROLLER CHAIN CADENAS DE RODILLO CHAÎNE À ROULEAUX

Double Strand Heavy Roller Chain

ANSI No.	Pitch (P)	Roller Width (W)	Roller Diameter (R)	Plate Height (H)	Plate Thickness (T)	Pin Diameter (D)	Overall Width (F)	Overall Width (G)	Transverse Pitch (K)	Average Tensile Strength (lbs)
60H-2	0.750"	0.500"	0.469"	0.673"	0.125"	0.234"	1.063"	1.114"	1.028"	23,320
80H-2	1.000"	0.625"	0.625"	0.935"	0.156"	0.312"	1.346"	1.429"	1.283"	39,600
100H-2	1.250"	0.750"	0.750"	1.165"	0.187"	0.375"	1.616"	1.782"	1.539"	61,600
120H-2	1.500"	1.000"	0.875"	1.378"	0.218"	0.437"	2.010"	2.167"	1.925"	83,200
140H-2	1.750"	1.000"	1.000"	1.661"	0.250"	0.500"	2.155"	2.337"	2.055"	108,100
160H-2	2.000"	1.250"	1.125"	1.898"	0.281"	0.562"	2.555"	2.760"	2.437"	137,000
200H-2	2.500"	1.500"	1.562"	2.374"	0.375"	0.781"	3.212"	3.552"	3.083"	232,000

Double Strand Heavy Roller Chain Availability



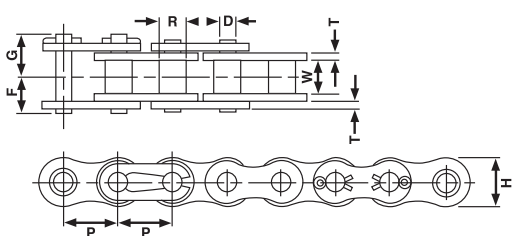
	-CUT	-10	-15	-20	-25	-50	-100
SYCH60H-2		•	•	•	•	•	•
SYCH80H-2		•	•	•	•	•	•
SYCH100H-2		•	•	•	•	•	•
SYCH120H-2		•	•	•	•	•	•
SYCH140H-2		•	•	•	•	•	•
SYCH160H-2		•	•	•	•	•	•
SYCH200H-2		•	•	•	•	•	•

ROLLERLESS CHAIN CADENAS SIN RODILLO CHAÎNE SANS ROULEAUX

Single Strand Rollerless Chain

ANSI No.	Pitch (P)	Roller Width (W)	Roller Diameter (R)	Plate Height (H)	Plate Thickness (T)	Pin Diam (D)	Overall Width (F)	Overall Width (G)	Average Tensile Strength Lbs.	Master Link
25	0.250"	0.125"	0.130"	0.230"	0.030"	0.091"	0.152"	0.183"	900	SY25R
35	0.375"	0.188"	0.200"	0.354"	0.051"	0.141"	0.230"	0.284"	2,100	SY35R
65	0.750"	0.500"	0.330"	0.673"	0.095"	0.234"	0.500"	0.549"	8,500	SY65R
85	1.000"	0.620"	0.437"	0.945"	0.128"	0.312"	0.636"	0.750"	14,500	SY85R
105	1.250"	0.744"	0.535"	1.180"	0.157"	0.375"	0.794"	0.910"	24,000	SY105R

Single Strand Rollerless Chain Availability

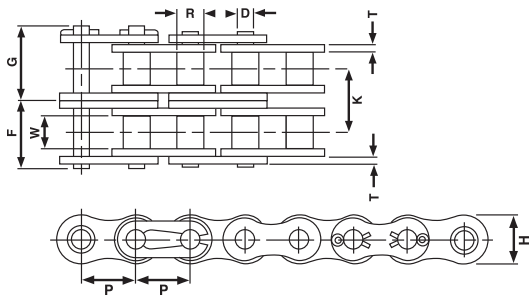


	-CUT	-10	-15	-20	-25	-50	-100
SYCH25		•	•	•	•	•	•
SYCH35	•	•	•	•	•	•	•
SYCH65	•	•	•	•	•	•	•
SYCH85	•	•	•	•	•	•	•
SYCH105	•	•	•	•	•	•	•

Double Strand Rollerless Chain

ANSI No.	Pitch (P)	Roller Width (W)	Roller Diameter (R)	Plate Height (H)	Plate Thickness (T)	Pin Diam (D)	Overall Width (F)	Overall Width (G)	Transverse Pitch K	Average Tensile Strength Lbs.	Master Link
35-2	0.375"	0.188"	0.200"	0.340"	0.050"	0.141"	0.429"	0.469"	0.399"	4,850	SY35-2R

Double Strand Rollerless Chain Availability



	-CUT	-10	-15	-20	-25	-50	-100
SYCH35-2		•	•	•	•	•	•

LINDE CHAIN CADENAS LINDE CHAÎNE LINDE



- Exact fit chain for over 250 Linde applications

- Available: 19.05mm, 25.40mm and 31.75mm pitch

- Cut on inners, outers or a combination to be connected or fixed to special ends and anchors

- Made of Steel

- Cadena Linde con ajuste exacto para más de 250 aplicaciones

- Disponible en varias distancias de paso: 19.05mm, 25.40mm y 31.75mm pitch

- Se corta el exterior, el interior o los dos lados para que se conecte o se fije en la punta y al anclaje

- Hecho de acero

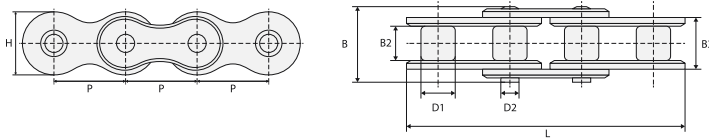
- Ajustement exact de la chaîne pour près de 250 applications Linde

- Disponible: 19.05mm, 25.40mm et 31.75mm pitch

- Couper sur l'extérieur ou l'intérieur ou bien les deux afin d'être fixé sur des attelages ou ancras particulières

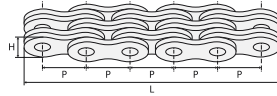
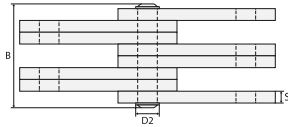
- En Acier

Simplex Roller Chain



	Length L (m)	Pitch Length P (mm)	Pin Diameter D2 (mm)	Total Width B (mm)	Total Height H (mm)	Inner Link Width B2 (mm)	Width B3 (mm)	Roller Diameter D1 (mm)	Type of Roller Chain	Material
LI9495054066	0.98m	9.53mm	3.28mm	13.50mm	8.30mm	5.72mm	8.53mm	6.35mm	SR	Steel
LI9495018055	0.88m	15.88mm	5.08mm	18.90mm	14.60mm	9.65mm	13.28mm	10.16mm	SR	Steel

Leaf Chain



Part Number	Lacing	Number of Chain Links	Length L (m)	Pitch Length P (mm)	Pin Diameter D2 (mm)	Total Width B (mm)	Total Height H (mm)	Plate Thickness S (mm)	Type of Leaf Chain
LI9495113111	4 x 3	111	2.82m	25.40mm	9.53mm	33.10mm	23.60mm	4.00mm	3
LI9495116051	4 x 4	51	1.30m	25.40mm	9.53mm	60.00mm	23.60mm	4.00mm	33
LI9495116053	4 x 4	53	1.35m	25.40mm	9.53mm	60.00mm	23.60mm	4.00mm	33
LI9495116057	4 x 4	57	1.45m	25.40mm	9.53mm	60.00mm	23.60mm	4.00mm	33
LI9495116059	4 x 4	59	1.50m	25.40mm	9.53mm	60.00mm	23.60mm	4.00mm	33
LI9495110091	4 x 4	91	2.31m	25.40mm	8.27mm	36.60mm	20.30mm	3.06mm	27
LI9495110095	4 x 4	95	2.41m	25.40mm	8.27mm	36.60mm	20.30mm	3.06mm	27
LI9495110097	4 x 4	97	2.47m	25.40mm	8.27mm	36.60mm	20.30mm	3.06mm	27
LI9495105105	4 x 4	105	2.67m	25.40mm	8.27mm	52.50mm	20.00mm	3.05mm	26
LI9495110107	4 x 4	107	2.72m	25.40mm	8.27mm	36.60mm	20.30mm	3.06mm	27
LI9495110111	4 x 4	111	2.82m	25.40mm	8.27mm	36.60mm	20.30mm	3.06mm	27
LI9495104053	4 x 6	53	1.35m	25.40mm	9.53mm	68.50mm	23.60mm	4.00mm	29
LI9495104055	4 x 6	55	1.40m	25.40mm	9.53mm	68.50mm	23.60mm	4.00mm	29
LI9495106089	4 x 6	89	2.26m	25.40mm	8.27mm	59.50mm	20.50mm	3.05mm	31
LI9495106095	4 x 6	95	2.41m	25.40mm	8.27mm	59.50mm	20.50mm	3.05mm	31
LI9495106103	4 x 6	103	2.62m	25.40mm	8.27mm	59.50mm	20.50mm	3.05mm	31
LI9495111105	4 x 6	105	2.67m	25.40mm	9.53mm	59.50mm	23.60mm	3.05mm	31
LI9495106113	4 x 6	113	2.87m	25.40mm	8.27mm	59.50mm	20.50mm	3.05mm	31
LI9495108065	4 x 8	65	1.65m	25.40mm	9.53mm	78.10mm	21.00mm	4.00mm	28

	Overall Length	Hole Diameter	Wheel Material
SY45530	2.17" 55mm	0.39" 10mm	None



SY1232188	2.44" 62mm	0.24" 6mm	None
-----------	---------------	--------------	------



SY1232098	2.48" 63mm	0.24" 6mm	None
-----------	---------------	--------------	------



SY1220280	2.95" 75mm	0.20" 5mm	M16
-----------	---------------	--------------	-----



SY1232077	2.76" 70mm	0.24" 6mm	M16
-----------	---------------	--------------	-----



SY1232189	3.07" 78mm	0.98" 25mm	None
-----------	---------------	---------------	------



SY1232076	3.35" 85mm	0.31" 8mm	M18
-----------	---------------	--------------	-----



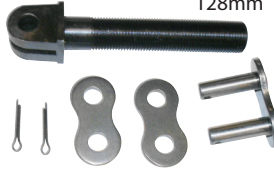
SY57722	4.13" 105mm	0.24" 6mm	5/8 - 8
---------	----------------	--------------	---------



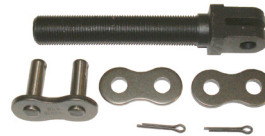
	Overall Length	Hole Diameter	Wheel Material
SY1232190	4.33" 110mm	0.31" 8mm	M16



SY1232191	5.04" 128mm	0.35" 9mm	M18
-----------	----------------	--------------	-----



SY1232074	5.51" 140mm	0.39" 10mm	M18
-----------	----------------	---------------	-----



SY1232192	5.87" 149mm	0.20" 5mm	7/16 - 20
-----------	----------------	--------------	-----------



SY1232193	5.91" 150mm	0.31" 8mm	M16
-----------	----------------	--------------	-----



SY1232194	5.94" 151mm	0.39" 10mm	3/4 - 16
-----------	----------------	---------------	----------



SY1232099	6.02" 153mm	0.24" 6mm	5/8 - 18
-----------	----------------	--------------	----------



SY1232075	6.10" 155mm	0.43" 11mm	M22
-----------	----------------	---------------	-----



CHAIN ANCHOR ANCLA DE CADENA ANCRAGE DE CHAÎNE

	Overall Length	Hole Diameter	Wheel Material
SY57893	6.69" 170mm	0.24" 6mm	5/8 - 18
			
SY58228	6.69" 170mm	0.24" 6mm	5/8 - 18
			
SY1232195	6.82" 173mm	0.31" 8mm	M12
			
SY107801	7.32" 186mm	0.39" 10mm	M18
			
SY1232196	7.40" 188mm	0.24" 6mm	M16
			
SY51484	7.48" 190mm	0.31" 8mm	M16
			
SY1232078	8.27" 210mm	0.24" 6mm	M16
			

	Overall Length	Hole Diameter	Wheel Material
SY1232197	8.50" 216mm	0.43" 11mm	M22
			
SY1232079	8.66" 220mm	0.31" 8mm	M14
			
SY33123	9.51" 242mm	0.39" 10mm	3/4 - 16
			
SY1232072	9.72" 247mm	0.39" 10mm	M18
			
SY1232198	12.00" 305mm	0.39" 10mm	1-14
			
SY1232199	12.87" 327mm	0.39" 10mm	M16
			

	Chain Length	Type of Chain	Application
SY1232083	3.61' 1.10m	BL534	Mitsubishi / Caterpillar



	Chain Length	Type of Chain	Application
SY1232085	4.56' 1.39m	BL634	Toyota



SY1232080	4.10' 1.25m	BL534	Mitsubishi / Caterpillar
-----------	----------------	-------	--------------------------



SY1232086	5.58' 1.70m	BL634	Toyota
-----------	----------------	-------	--------



SY1232081	4.63' 1.41m	BL534	Toyota
-----------	----------------	-------	--------



SY1232088	6.07' 1.85m	BL634	Toyota
-----------	----------------	-------	--------



SY1232082	6.92' 2.11m	BL534	Toyota
-----------	----------------	-------	--------



SY1232087	6.20' 1.89m	BL634	Toyota
-----------	----------------	-------	--------



SY1239144	4.18' 1.27m	BL634	Toyota
-----------	----------------	-------	--------



SY1232084	6.30' 1.92m	BL634	Mitsubishi / Caterpillar
-----------	----------------	-------	--------------------------



SY1239141	4.31' 1.31m	BL634	Toyota
-----------	----------------	-------	--------



SY1239139	3.92' 1.19m	BL823	Toyota
-----------	----------------	-------	--------






SY1239140	4.43' 1.35m	BL634	Toyota
-----------	----------------	-------	--------



SY1232090	4.92' 1.50m	BL823	Toyota
-----------	----------------	-------	--------



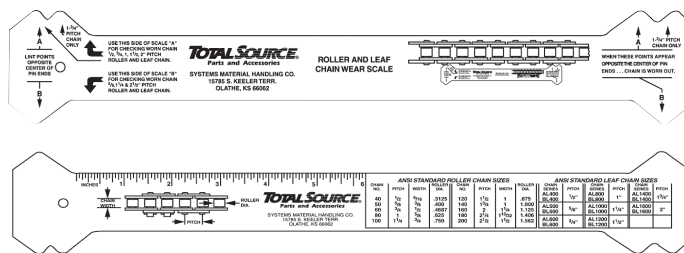
CHAIN WEAR GAUGE MEDIDOR DE DESGASTE INDICATEUR D'USURE

	Chain Length	Type of Chain	Application		Chain Length	Type of Chain	Application
SY1239138	5.25' 1.60m	BL823	Toyota		SY1239145	9.42' 2.87m	BL823 Toyota
SY1239142	5.74' 1.75m	BL823	Toyota		SY1232091	4.27' 1.30m	BL834 Mitsubishi / Caterpillar
SY1232089	6.27' 1.91m	BL823	Toyota		SY1239143	6.41' 1.95m	BL834 Toyota

CHAIN WEAR GAUGE MEDIDOR DE DESGASTE INDICATEUR D'USURE

Description

SYCH1 Chain wear gauge Indicates level of chain wear



Description

SYCH2 TotalSource. brand - professional chain wear gauge Indicates level of chain wear with a precise indication of percentage elongation, easy to read scale, can use on all leaf and roller chains up to 3" pitch



Parts sourced by TVH.

MAGNASOURCE INC.

833-362-8590 / support@magnasourceinc.com
WWW.MAGNASOURCEINC.COM